



DAHLMAN[®]

PREMIUM SEED | PERFORMANCE PROVEN



2021 PRODUCT GUIDE

CORN | SOYBEANS | ALFALFA | WHEAT





Dahlman Seed is an **INDEPENDENT, FAMILY** owned and operated Seed Company that has continued to provide farmers with the highest quality corn, soybean and alfalfa products since 1922. We provide positive experiences and excellent grower satisfaction for customers year after year. Our Dahlman Seed mission is to stay strong by offering **PREMIUM SEED/PERFORMANCE PROVEN** products and choice in 2021 and beyond. **NEW for 2021 we are offering XtendFlex soybeans.**

The Dahlman Seed Team understands the significance of standing behind every unit of seed we sell because we know your seed decision is one of the most important decisions you will make each year. We don't take this decision lightly, and know there isn't room for compromise when you choose a seed supplier. You can trust Dahlman Seed will always strive to provide you with the highest level of seed quality, performance and expert knowledge. **Our goal is to surpass your high expectations.**

Our products have **PROVEN** to perform at high levels, consistently year after year. This makes us extremely excited to present our 2021 product line-ups. We are

offering **32 corn hybrids with 4 of these being new plus 11 very high performing Roundup Ready 2 Xtend soybean varieties.** Dahlman Seed has always been a leader moving swiftly to bring improved genetics and the best traits to the market. This season we have added **1 new XtendFlex** soybean and have **9 Enlist E3 soybean with 5 being new.**

The broad genetic background and constant improvements through breeding that occurs annually allows us to offer Roundup Ready 2 Xtend, XtendFlex and Enlist E3 varieties with the best characteristics, yield and overall performance we have ever seen in 99 years!

We take the responsibility of **PREMIUM SEED/ PERFORMANCE PROVEN** very seriously because we know buying the right seed for your farm is one of the most important decisions you make each year. You can trust **Dahlman's goal is to surpass your high expectations.**

Sincerely,
The Dahlman Seed Team

Table of Contents

Welcome/Introduction.....	2-3	Dahlman Roundup Ready® Alfalfa and 2021 Characteristics	24
Proven Defense Against Yield Robbers	4	Dahlman Conventional Alfalfa, Wheat and 2021 Characteristics	25
Corn Insect B.t. Trait Reference Tables	5-7	Dahlman Corn Brands 2021 Reference Chart	26
Dahlman Corn Brands and 2021 Characteristics ...	8-15	Trademarks and Registrations.....	27
Dahlman Soybean Brands 2021 Characteristics... ..	16-23		
RR2Yield®	16		
XtendFlex®	18		
RR2Xtend®	16-19		
Enlist E3®	20-23		



Premium Seed

Producing the highest quality seed is top priority. Seed quality starts with planting and harvesting at just the right time. Once the seed is dry and ready for the cleaning and grading process you can be assured strict standards have been followed. You can trust the experience and integrity of a well-trained Dahlman Seed production crew to operate the state-of-the-art facility. Putting the highest quality seed and pride into every Dahlman Seed bag.



Performance Proven

Consistent performing products. We personally observe products multiple years across a wide range of environments from emergence to harvest. Field observation notes taken during a season are evaluated with the yield data to assist in a final decision to commercialize into the Dahlman Seed product portfolio.



Expert Knowledge

The Dahlman sales team is committed to personal service. Working to build relationships because maximizing yield starts with educated recommendations. Well trained Sales Representatives and Dealers have many years of experience gaining the knowledge needed to adapt with changes taking place around the World and the Ag industry today. We use that knowledge and get to know your fields and farming practices so we can provide the right mix of genetics and traits for your farm so you can be successful.

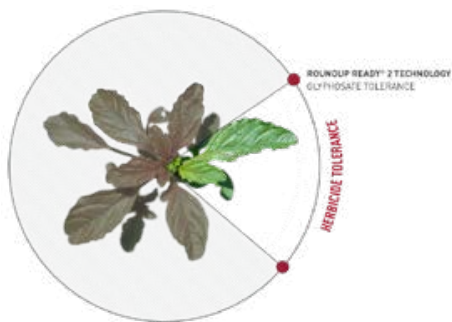
PROVEN DEFENSE AGAINST ABOVE-GROUND YIELD ROBBERS

VT Double PRO[®]
 RIB COMPLETE[®]

VT Double PRO[®] RIB Complete[®] corn blend products protect yield potential and grain quality with dual modes of action proven **effective against above-ground pests**, including southwestern corn borer and European corn borer, fall armyworm, and corn earworm.

WHAT SETS VT DOUBLE PRO[®] RIB COMPLETE[®] CORN BLEND ABOVE THE REST:

- The first double-stacked corn trait with two ways to control above-ground insects
- Helps plants withstand herbicides, preventing weeds from competing for crucial nutrients and water
- Developed by the industry leader in trait technology and germplasm integration
- Plant-and-go convenience with no separate refuge required in the Corn-Growing Area

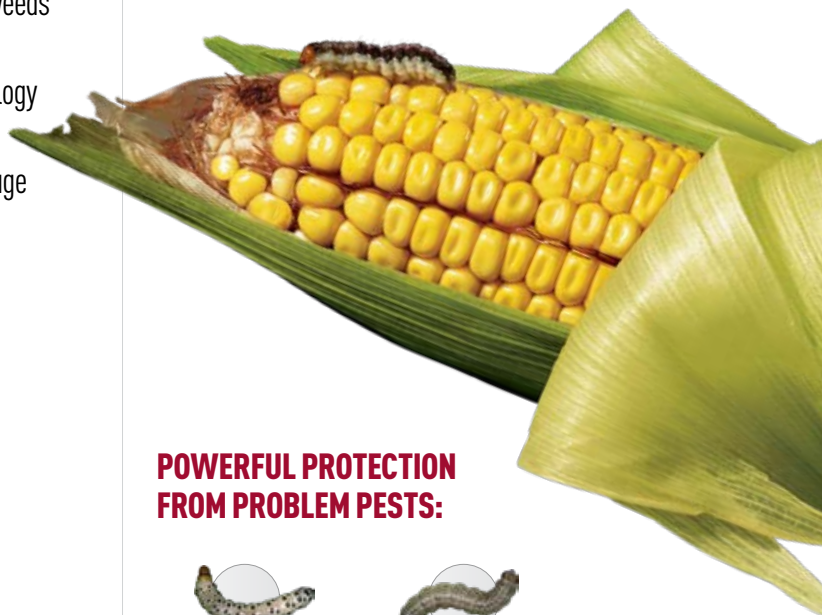


CUT DOWN ON WEEDS, NOT YIELD

Roundup Ready[®] 2 Technology helps the corn plant withstand glyphosate herbicide applications. This helps to prevent susceptible weeds from robbing plants of the nutrients and water they need.

EXCEPTIONAL ABOVE-GROUND PROTECTION

Two individual modes of action give corn plants the above-ground protection they need against major pests that can inflict serious crop damage.



POWERFUL PROTECTION FROM PROBLEM PESTS:



SOUTHWESTERN CORN BORER



EUROPEAN CORN BORER



CORN EARWORM



FALL ARMYWORM

Find more information that will help you maximize your yield and profit potential at Genuity.com/CompareTraits



Agronomy Spotlight



Corn Insect B.t. Trait Reference Table

					ABOVE-GROUND					BELOW-GROUND			
	<ul style="list-style-type: none"> • One effective mode of action • • Two effective modes of action <p>Refer to the table on page 3 for information regarding efficacy against specific insect pests.</p>	% Refuge in Bag	Glyphosate Tolerant	Glufosinate Tolerant	VT Double PRO®	Herculex® I	YieldGard® Corn Borer	Agrisure Viptera®	Agrisure® CB	YieldGard VT Rootworm/RR2™	Herculex® RW	Agrisure® RW	Agrisure Duracade®
BAYER CROP SCIENCE	VT Double PRO® corn		•		••								
	VT Double PRO® RIB Complete® corn blend	5%	•		••								
	Trecepta® corn		•		••			•					
	Trecepta® RIB Complete® corn blend	5%	•		••			•					
	VT Triple PRO® corn		•		••					•			
	VT Triple PRO® RIB Complete® corn blend	10%	•		••					•			
	SmartStax® corn		•	•	••	•				•	•		
	SmartStax® RIB Complete® corn blend	5%	•	•	••	•				•	•		
CORTEVA AGRISCIENCE	Herculex® I		•	•		•							
	Optimum® Intrasect®		•	•		•	•						
	Optimum® AcreMax®	5%	•	•		•	•						
	Optimum® Leptra®		•	•		•	•	•					
	Optimum® AcreMax® Leptra®	5%	•	•		•	•	•					
	PowerCore®		•	•	••	•							
	PowerCore® Refuge Advanced	5%	•	•	••	•							
	Herculex® XTRA		•	•		•					•		
	Optimum® TRIsect®		•	•		•						•	
	Optimum® Intrasect® Xtra		•	•		•	•				•		
	Optimum® AcreMax® Xtra	10%	•	•		•	•				•		
	Optimum® Intrasect® TRIsect®		•	•		•	•					•	
	Optimum® AcreMax® TRIsect®	10%	•	•		•	•					•	



Agronomy Spotlight



Corn Insect B.t. Trait Reference Table

					ABOVE-GROUND					BELOW-GROUND			
	<ul style="list-style-type: none"> • One effective mode of action • • Two effective modes of action Refer to the table on page 3 for information regarding efficacy against specific insect pests.	% Refuge in Bag	Glyphosate Tolerant	Glufosinate Tolerant	VT Double PRO®	Herculex® I	YieldGard® Corn Borer	Agrisure Viptera®	Agrisure® CB	YieldGard VT Rootworm/RR2™	Herculex® RW	Agrisure® RW	Agrisure Duracade®
CORTEVA AGRISCIENCE	Optimum® IntraSect® XTreme		•	•		•	•				•	•	
	Optimum® AcreMax® XTreme	5%	•	•		•	•				•	•	
	Qrome®*	5%	•	•		•	•				•	•	
	SmartStax®		•	•	••	•				•	•		
	SmartStax® Refuge Advanced	5%	•	•	••	•				•	•		
SYNGENTA	Agrisure® 3010		•	•					•				
	Agrisure Artesian® 3010A		•	•					•				
	Agrisure® 3120 E-Z Refuge®	5%	•			•			•				
	Agrisure Artesian® 3120A E-Z Refuge®	5%	•			•			•				
	Agrisure Viptera® 3110 or 3110A		•	•				•	•				
	Agrisure Viptera® 3220 E-Z Refuge®	5%	•			•		•	•				
	Agrisure Viptera® 3220A E-Z Refuge®	5%	•			•		•	•				
	Agrisure Viptera® 3330 E-Z Refuge®	5%	•		••			•	•				
	Agrisure® 3000 GT		•	•					•			•	
	Agrisure Artesian® 3011A		•	•					•			•	
	Agrisure® 3122 E-Z Refuge®	5%	•			•			•		•	•	
	Agrisure Artesian® 3122A E-Z Refuge®	5%	•			•			•		•	•	
	Agrisure Viptera® 3111 or 3111A		•	•				•	•			•	
	Agrisure Duracade® 5122 E-Z Refuge®	5%	•			•			•			•	•
	Agrisure Duracade® 5122A E-Z Refuge®	5%	•			•			•			•	•
	Agrisure Duracade® 5222 E-Z Refuge®	5%	•			•		•	•			•	•
	Agrisure Duracade® 5222A E-Z Refuge®	5%	•			•		•	•			•	•

*Qrome contains event DP4114 which is a molecular stack of the insect protection genes in Herculex® I and Herculex® RW.



Agronomy Spotlight



Corn Insect B.t. Trait Reference Table

	ABOVE-GROUND					BELOW-GROUND			
	VT Double PRO® corn	Herculex® I	YieldGard® Corn Borer	Agrisure Viptera®	Agrisure® CB	YieldGard VT Rootworm/RR2™	Herculex® RW	Agrisure® RW	Agrisure Duracade®
European corn borer	**	*	*		*				
Southwestern corn borer	**	*	*	*	*				
Fall armyworm	**	*		*					
Corn earworm ^{1,2}	**			*					
Western bean cutworm				*					
Black cutworm		*		*					
Western corn rootworm						*	*	*	*
Northern corn rootworm						*	*	*	*
Mexican corn rootworm						*	*	*	*
**Dual-mode activity *Single-mode activity Mode of action equals control of pest.									
¹ Pioneer claims suppression of corn earworm with Herculex® I technology. Syngenta claims suppression of corn earworm with Bt11.									
² Cry1A.105 and Cry2Ab2 from B.t. controls or suppresses corn earworm.									

Monsanto Company is a member of Excellence Through Stewardship® (ETS). Monsanto products are commercialized in accordance with ETS Product Launch Stewardship Guidance, and in compliance with Monsanto's Policy for Commercialization of Biotechnology-Derived Plant Products in Commodity Crops. This product has been approved for import into key export markets with functioning regulatory systems. Any crop or material produced from this product can only be exported to, or used, processed or sold in countries where all necessary regulatory approvals have been granted. It is a violation of national and international law to move material containing biotech traits across boundaries into nations where import is not permitted. Growers should talk to their grain handler or product purchaser to confirm their buying position for this product. Excellence Through Stewardship® is a registered trademark of Excellence Through Stewardship.

ALWAYS READ AND FOLLOW PESTICIDE LABEL DIRECTIONS. B.t. products may not yet be registered in all states. Check with your seed brand representative for the registration status in your state.

IMPORTANT IRM INFORMATION: RIB Complete® corn blend products do not require the planting of a structured refuge except in the Cotton-Growing Area where corn earworm is a significant pest. **See the IRM/Grower Guide for additional information. Always read and follow IRM requirements.**

Performance may vary, from location to location and from year to year, as local growing, soil and weather conditions may vary. Growers should evaluate data from multiple locations and years whenever possible and should consider the impacts of these conditions on the grower's fields.

Roundup Ready® 2 Technology contains genes that confer tolerance to glyphosate. Glyphosate will kill crops that are not tolerant to glyphosate. Insect control technology provided by Vip3A is utilized under license from Syngenta Crop Protection AG. Herculex® is a registered trademark of Dow AgroSciences LLC. Agrisure Viptera® is a registered trademark of a Syngenta group company. LibertyLink® and the Water Droplet Design® is a trademark of BASF Corporation. Respect the Refuge and Corn Design® and Respect the Refuge® are registered trademarks of National Corn Growers Association. RIB Complete®, Roundup Ready 2 Technology and Design™, Roundup Ready®, SmartStax®, Trecepta®, VT Double PRO® and VT Triple PRO® are trademarks of Bayer Group. All other trademarks are the property of their respective owners. ©2019 Bayer Group. All rights reserved. 1014_S1

CORN PRODUCTS

Dahlman Brand	Relative Maturity	GDUs to Mid-Silk	GDUs to Black Layer	Population Tolerance	Emergence	Early Vigor	Root Strength	Stalk Strength	Drought Tolerance
R41-22VT2PRIB	82	1110	2040	30-36	8.5	9.0	8.0	8.0	8.0
NEW! R41-12	82	1110	2040	30-36	8.5	9.0	8.0	8.0	8.0
NEW! R41-23VT2PRIB	82	1100	2030	30-34	8.5	8.5	8.0	8.0	8.0
NEW! R42-28VT2PRIB	84	1145	2100	30-36	8.0	8.5	8.0	8.0	8.5
R43-29VT2PRIB	85	1155	2125	30-34	8.0	8.5	7.5	8.0	7.0
R43-19	85	1155	2125	30-34	8.0	8.5	7.5	8.0	7.0
D43-01	85	1155	2125	30-34	8.0	8.5	7.5	8.0	7.0
R43-24VT2PRIB	86	1160	2225	30-34	8.5	9.0	7.0	8.5	8.5

KEY: 1 = Poor 2-3 = Fair 4-5 = Good 6-7 = Very Good 8-9 = Excellent

R41-22VT2PRIB 82 RM

Medium-Tall Plant Height | 2040 GDU to Black Layer

Strengths

- › Adapts to varying soils and environments
- › Excellent early season vigor for the northern cornbelt
- › Very good test weight
- › Solid overall disease tolerance
- › **RIB COMPLETE® - 5% refuge in the bag**



R41-12 82 RM **NEW!**

Medium-Tall Plant Height | 2040 GDU to Black Layer

Strengths

- › Adapts to varying soils and environments
- › Excellent early season vigor for the northern cornbelt
- › Very good test weight
- › Solid overall disease tolerance



R41-23VT2PRIB 82 RM **NEW!**

Medium-Tall Plant Height | 2030 GDU to Black Layer

Strengths

- › Best kept in 80-85 day RM zone
- › Position on average to better soils
- › Strong drought and heat stress tolerance
- › Open husks allowing for rapid drydown
- › **RIB COMPLETE® - 5% refuge in the bag**



R42-28VT2PRIB 84 RM **NEW!**

Medium Plant Height | 2100 GDU to Black Layer

Strengths

- › Adapts to varying soils and environments
- › Great Goss's Wilt rating
- › Very good drought stress tolerance
- › Strong overall agronomics plus excellent stability
- › **RIB COMPLETE® - 5% refuge in the bag**



Plant Height	Ear Type	Plant Health	Goss's Wilt	Fall Appearance	Drydown	Ear Retention	Test Weight	Corn Belt Refuge Requirement	Dahlman Brand
MT	SF	8.0	7.0	7.5	8.0	8.5	8.5	RIB	R41-22VT2PRIB
MT	SF	8.0	7.0	7.5	8.0	8.5	8.5		R41-12 <small>NEW!</small>
MT	SD	8.0	5.0	7.5	8.5	8.5	8.0	RIB	R41-23VT2PRIB <small>NEW!</small>
M	SF	8.5	7.0	7.0	7.0	8.0	7.5	RIB	R42-28VT2PRIB <small>NEW!</small>
MT	SD	8.5	5.5	7.5	8.5	8.0	7.0	RIB	R43-29VT2PRIB
MT	SD	8.5	5.5	7.5	8.5	8.0	7.0		R43-19
MT	SD	8.5	5.5	7.5	8.5	8.0	7.0		D43-01
MT	SF	7.0	5.0	6.5	8.0	7.5	7.0	RIB	R43-24VT2PRIB

KEY: 1 = Poor 2-3 = Fair 4-5 = Good 6-7 = Very Good 8-9 = Excellent

R43-29VT2PRIB 85 RM

Medium-Tall Plant Height | 2125 GDU to Black Layer

Strengths

- › Excellent emergence and early season vigor
- › Good choice for reduced tillage
- › Adapts to varying soils and environments
- › Very girthy ear type
- › **RIB COMPLETE® - 5% refuge in the bag**



R43-19 85 RM

Medium-Tall Plant Height | 2125 GDU to Black Layer

Strengths

- › Excellent emergence and early season vigor
- › Good choice for reduced tillage
- › Adapts to varying soils and environments
- › Very girthy ear type
- › Medium tall plant with strong stalks



D43-01 85 RM

Medium-Tall Plant Height | 2125 GDU to Black Layer

Strengths

- › Excellent emergence and early season vigor
- › Good choice for reduced tillage
- › Adapts to varying soils and environments
- › Very girthy ear type
- › Medium tall plant with strong stalks

CONVENTIONAL

R43-24VT2PRIB 86 RM

Medium-Tall Plant Height | 2225 GDU to Black Layer

Strengths

- › Strong yield performance across environments
- › Outstanding early season vigor
- › Excellent stress tolerance and stalk strength
- › Strong disease tolerance package
- › **RIB COMPLETE® - 5% refuge in the bag**



Dahlman Brand	Relative Maturity	GDUs to Mid-Silk	GDUs to Black Layer	Population Tolerance	Emergence	Early Vigor	Root Strength	Stalk Strength	Drought Tolerance
R45-28VT2PRIB	90	1225	2240	30-34	8.0	8.0	8.0	7.0	8.0
R45-12	90	1225	2240	30-34	8.0	8.0	8.0	7.0	8.0
R45-25VT2PRIB	90	1160	2240	32-36	8.0	8.5	8.5	8.5	7.5
D45-03	90	1200	2230	32-36	8.5	9.0	9.0	8.5	8.5
R46-27VT2PRIB	92	1240	2305	32-36	8.0	8.5	8.5	8.5	8.5
NEW! R46-14	92	1240	2305	32-36	8.0	8.5	8.5	8.5	8.5
D46-04	92	1240	2305	32-36	8.0	8.5	8.5	8.5	8.5
R47-24VT2PRIB	94	1220	2250	32-36	8.5	8.5	8.0	7.5	8.0

KEY: 1 = Poor 2-3 = Fair 4-5 = Good 6-7 = Very Good 8-9 = Excellent

R45-28VT2PRIB 90 RM

Medium-Tall Plant Height | 2240 GDU to Black Layer

Strengths

- › Good ear flex and grain drydown
- › Overall solid disease package
- › Excellent on clay soils plus good stress tolerance
- › Very strong Goss's Wilt tolerance
- › **RIB COMPLETE[®] - 5% refuge in the bag**



R45-12 90 RM

Medium-Tall Plant Height | 2240 GDU to Black Layer

Strengths

- › Good ear flex and grain drydown
- › Overall solid disease package
- › Excellent on clay soils plus good stress tolerance
- › Very strong Goss's Wilt tolerance



R45-25VT2PRIB 90 RM

Medium Plant Height | 2240 GDU to Black Layer

Strengths

- › Great choice for cold soils, superior emergence and early vigor
- › Excellent disease package
- › Prefers med-high to high plant populations
- › Very strong Goss's Wilt tolerance
- › **RIB COMPLETE[®] - 5% refuge in the bag**



D45-03 90 RM

Medium Plant Height | 2230 GDU to Black Layer

Strengths

- › Very good drought tolerance
- › Excellent stalk and root strength
- › Recommended for corn on corn
- › Responds well to higher populations where soils, fertility and moisture allow
- › Consistent performance from year to year

CONVENTIONAL

Plant Height	Ear Type	Plant Health	Goss's Wilt	Fall Appearance	Drydown	Ear Retention	Test Weight	Corn Belt Refuge Requirement	Dahlman Brand
MT	SF	8.5	8.0	7.5	8.0	9.0	7.0	RIB	R45-28VT2PRIB
MT	SF	8.5	8.0	7.5	8.0	9.0	7.0		R45-12
M	SF	8.5	8.5	8.0	7.0	9.0	7.0	RIB	R45-25VT2PRIB
M	SD	8.0	6.0	8.5	7.0	9.0	7.0		D45-03
MT	SF	7.5	6.0	8.0	7.0	8.5	7.0	RIB	R46-27VT2PRIB
MT	SF	7.5	6.0	8.0	7.0	8.5	7.0		R46-14 <small>NEW!</small>
MT	SF	7.5	6.0	8.0	7.0	8.5	7.0		D46-04
MT	SF	7.5	6.0	8.0	8.0	8.5	7.0	RIB	R47-24VT2PRIB

KEY: 1 = Poor 2-3 = Fair 4-5 = Good 6-7 = Very Good 8-9 = Excellent

R46-27VT2PRIB 92 RM

Medium-Tall Plant Height | 2305 GDU to Black Layer

Strengths

- › Consistent performance across many soils
- › Very strong early season vigor
- › Best in adapted RM zone with good southern movement
- › Good drought tolerance
- › **RIB COMPLETE® - 5% refuge in the bag**



R46-14 92 RM NEW!

Medium-Tall Plant Height | 2305 GDU to Black Layer

Strengths

- › Consistent performance across many soils
- › Very strong early season vigor
- › Best in adapted RM zone with good southern movement
- › Good drought tolerance



D46-04 92 RM

Medium-Tall Plant Height | 2305 GDU to Black Layer

Strengths

- › Consistent performance across many soils
- › Very strong early season vigor
- › Best in adapted RM zone with good southern movement
- › Good drought tolerance

CONVENTIONAL

R47-24VT2PRIB 94 RM

Medium-Tall Plant Height | 2250 GDU to Black Layer

Strengths

- › Can position as a full season hybrid
- › Adapts to most soils and yield environments
- › Solid agronomics with quick drydown
- › Good choice for high management practices
- › **RIB COMPLETE® - 5% refuge in the bag**



Dahlman Brand	Relative Maturity	GDUs to Mid-Silk	GDUs to Black Layer	Population Tolerance	Emergence	Early Vigor	Root Strength	Stalk Strength	Drought Tolerance
R47-26VT2PRIB	94	1210	2235	30-34	8.0	8.0	8.5	7.5	7.5
R47-10	94	1230	2340	32-36	7.5	7.5	9.0	7.5	8.5
R48-28VT2PRIB	95	1250	2340	30-34	8.5	9.0	9.0	8.5	8.5
D48-04	95	1250	2340	30-34	8.5	9.0	9.0	8.5	8.5
R48-21VT2PRIB	96	1250	2340	30-34	8.5	9.0	8.5	8.0	7.0
D48-08	96	1230	2340	32-36	7.5	7.5	9.0	7.5	8.5
R49-23VT2PRIB	98	1210	2420	32-36	8.5	8.5	8.5	8.0	8.0
D49-09	98	1210	2420	32-36	8.5	8.5	8.5	8.0	8.0

KEY: 1 = Poor 2-3 = Fair 4-5 = Good 6-7 = Very Good 8-9 = Excellent

R47-26VT2PRIB 94 RM

Medium Plant Height | 2235 GDU to Black Layer

Strengths

- › Good western movement but adapts from Dakotas to Wisconsin
- › Excellent stay green and late season intactness
- › Solid agronomics plus very good grain drydown
- › Good choice for well drained soils
- › **RIB COMPLETE® - 5% refuge in the bag**



R47-10 94 RM

Medium Plant Height | 2340 GDU to Black Layer

Strengths

- › Excellent grain quality and test weight
- › Outstanding root and stalk strength
- › Good Goss's Wilt tolerance
- › Plant at medium high populations
- › Good choice on stress prone acres



R48-28VT2PRIB 95 RM

Medium Plant Height | 2340 GDU to Black Layer

Strengths

- › Strong drought tolerant and versatile hybrid
- › Adapts to most soils across our market area
- › Good choice for cold soils and minimum tillage
- › Excellent late season intactness and standability
- › **RIB COMPLETE® - 5% refuge in the bag**



D48-04 95 RM

Medium Plant Height | 2340 GDU to Black Layer

Strengths

- › Strong drought tolerant and versatile hybrid
- › Adapts to most soils across our market area
- › Good choice for cold soils and minimum tillage
- › Excellent late season intactness and standability
- › Very good Goss's Wilt tolerance

CONVENTIONAL

Plant Height	Ear Type	Plant Health	Goss's Wilt	Fall Appearance	Drydown	Ear Retention	Test Weight	Corn Belt Refuge Requirement	Dahlman Brand
M	SF	8.0	8.0	8.0	8.0	8.5	8.5	RIB	R47-26VT2PRIB
M	SD	8.0	8.0	8.5	7.0	9.0	8.5		R47-10
M	SF	8.0	6.5	8.5	7.5	8.5	8.5	RIB	R48-28VT2PRIB
M	SF	8.0	6.5	8.5	7.5	8.5	8.5		D48-04
M	SF	7.0	4.5	7.5	8.0	8.0	9.0	RIB	R48-21VT2PRIB
M	SD	8.0	8.0	8.5	7.0	9.0	8.5		D48-08
M	SD	7.0	4.5	9.0	8.5	8.0	7.0	RIB	R49-23VT2PRIB
M	SD	7.0	4.5	9.0	8.5	8.0	7.0		D49-09

KEY: 1 = Poor 2-3 = Fair 4-5 = Good 6-7 = Very Good 8-9 = Excellent

R48-21VT2PRIB 96 RM

Medium Plant Height | 2340 GDU to Black Layer

Strengths

- › Top end yield across a very large area of adaptation
- › Semi flex ear that can be positioned on tough ground
- › Good choice for cold soils and minimum tillage
- › Very good test weight
- › **RIB COMPLETE® - 5% refuge in the bag**



D48-08 96 RM

Medium Plant Height | 2340 GDU to Black Layer

Strengths

- › Excellent grain quality and test weight
- › Outstanding root and stalk strength
- › Good Goss's Wilt tolerance
- › Plant at medium high populations
- › Good choice on stress prone acres

CONVENTIONAL

R49-23VT2PRIB 98 RM

Medium Plant Height | 2420 GDU to Black Layer

Strengths

- › Outstanding yield potential plus quick drydown
- › Consistent ear size that shows nice girth
- › Excellent late season intactness
- › Very early flowering 98 day hybrid
- › **RIB COMPLETE® - 5% refuge in the bag**



D49-09 98 RM

Medium Plant Height | 2420 GDU to Black Layer

Strengths

- › Outstanding yield potential plus quick drydown
- › Consistent ear size that shows nice girth
- › Excellent late season intactness
- › Very early flowering 98 day hybrid
- › Fast emergence and excellent early season vigor

CONVENTIONAL

Dahlman Brand	Relative Maturity	GDUs to Mid-Silk	GDUs to Black Layer	Population Tolerance	Emergence	Early Vigor	Root Strength	Stalk Strength	Drought Tolerance
R49-25VT2PRIB	98	1225	2400	30-34	8.5	8.5	8.5	8.0	8.0
D49-02	98	1225	2400	30-34	8.5	8.5	8.5	8.0	8.0
R50-357SSRIB	100	1230	2395	30-34	8.0	7.5	8.5	8.5	8.5
R51-22VT2PRIB	101	1230	2395	30-34	8.0	7.5	8.5	8.5	8.5
R52-24VT2PRIB	103	1280	2440	30-34	8.5	9.0	8.5	8.5	8.0
R52-14	103	1280	2440	30-34	8.5	9.0	8.5	8.5	8.0
D52-04	103	1280	2440	30-34	8.5	9.0	8.5	8.5	8.0
R53-359SSRIB	106	1240	2480	30-36	7.5	8.0	8.5	8.5	8.5

KEY: 1 = Poor 2-3 = Fair 4-5 = Good 6-7 = Very Good 8-9 = Excellent

R49-25VT2PRIB 98 RM

Medium Plant Height | 2400 GDU to Black Layer

Strengths

- › Adapts to medium and high yield environments
- › Excellent late season intactness
- › Overall solid agronomic and disease package
- › Very good Goss's Wilt tolerance
- › **RIB COMPLETE[®] - 5% refuge in the bag**



D49-02 98 RM

Medium Plant Height | 2400 GDU to Black Layer

Strengths

- › Adapts to medium and high yield environments
- › Excellent late season intactness
- › Overall solid agronomic and disease package
- › Very good Goss's Wilt tolerance

CONVENTIONAL

R50-357SSRIB 100 RM

Medium Plant Height | 2395 GDU to Black Layer

Strengths

- › Superior overall agronomics package
- › Adapts to varying soils and moves west to east well
- › Great late season intactness and stress tolerance
- › Solid disease package
- › **RIB COMPLETE[®] - 5% refuge in the bag**



R51-22VT2PRIB 101 RM

Medium Plant Height | 2395 GDU to Black Layer

Strengths

- › Recommended for corn on corn
- › Overall solid agronomic package
- › Excellent late season intactness and test weight
- › Good Goss's Wilt tolerance
- › **RIB COMPLETE[®] - 5% refuge in the bag**



Plant Height	Ear Type	Plant Health	Goss's Wilt	Fall Appearance	Drydown	Ear Retention	Test Weight	Corn Belt Refuge Requirement	Dahlman Brand
M	SF	8.5	8.0	8.5	7.5	8.0	8.5	RIB	R49-25VT2PRIB
M	SF	8.5	8.0	8.5	7.5	8.0	8.5		D49-02
M	SF	8.5	7.0	8.5	8.0	8.0	9.0	RIB	R50-357SSRIB
M	SF	8.5	7.0	8.5	8.0	8.0	9.0	RIB	R51-22VT2PRIB
MT	SF	8.0	8.0	8.0	7.5	8.5	7.0	RIB	R52-24VT2PRIB
MT	SF	8.0	8.0	8.0	7.5	8.5	7.0		R52-14
MT	SF	8.0	8.0	8.0	7.5	8.5	7.0		D52-04
M	SF	8.5	8.5	8.5	8.0	8.5	8.5	RIB	R53-359SSRIB

KEY: 1 = Poor 2-3 = Fair 4-5 = Good 6-7 = Very Good 8-9 = Excellent

R52-24VT2PRIB 103 RM

Medium-Tall Plant Height | 2440 GDU to Black Layer

Strengths

- › Widely adapted across environments and soil types
- › Overall solid agronomic package
- › Excellent early season vigor good for cold soils
- › Good Goss's Wilt tolerance
- › **RIB COMPLETE® - 5% refuge in the bag**



R52-14 103 RM

Medium-Tall Plant Height | 2440 GDU to Black Layer

Strengths

- › Widely adapted across environments and soil types
- › Overall solid agronomic package
- › Excellent early season vigor good for cold soils
- › Good Goss's Wilt tolerance



D52-04 103 RM

Medium-Tall Plant Height | 2440 GDU to Black Layer

Strengths

- › Widely adapted across environments and soil types
- › Overall solid agronomic package
- › Excellent early season vigor good for cold soils
- › Good Goss's Wilt tolerance

CONVENTIONAL

R53-359SSRIB 106 RM

Medium Plant Height | 2480 GDU to Black Layer

Strengths

- › Adapts to all yield environments
- › Excellent Goss's Wilt tolerance
- › Very good drought tolerance and late season intactness
- › Outstanding early season vigor and test weight
- › **RIB COMPLETE® - 5% refuge in the bag**



SOYBEAN PRODUCTS

No dicamba may be used in-crop with seed in the Roundup Ready® Xtend Crop System unless and until approved by the U.S. EPA and the appropriate state agency for such use. As of 9/8/2020, no dicamba formulations are currently registered by the U.S. EPA for in-crop use with seed in the Roundup Ready® Xtend Crop System in the 2021 season.*

Dahlman Brand	Maturity	Plant Height	Plant Type	Iron Chlorosis	Emergence	Min-Till Adaptability	Stress Tolerance	Standability
68008XN	0.08	MT	MTh	8.0	8.5	8.5	8.5	7.0
5601RR2Y	0.1	MT	M/B	8.0	8.0	8.0	8.0	7.0
6903XN	0.3	MT	M/B	8.5	8.0	7.5	8.5	7.0
6703XN	0.3	M	M	7.0	8.5	9.0	8.5	8.5
6004XN	0.4	M	M/B	8.0	8.5	7.0	7.0	7.0
6909XN	0.9	MT	M/B	8.0	8.0	7.5	8.0	7.5
6010XN	1.0	M	M	8.0	8.0	8.0	7.0	8.0

KEY: 1 = Poor 2-3 = Fair 4-5 = Good 6-7 = Very Good 8-9 = Excellent

68008XN

0.08

Medium-Tall Plant Height | Medium-Thin Plant Type

Strengths

- › BEST in class IDC
- › Very solid SWM tolerance
- › Brown Stem Rot resistant
- › Great choice for continuous soybeans or min-till
- › Rps 1k gene for multi-race Phytophthora

› SCN Tolerance



5601RR2Y

0.1

Medium-Tall Plant Height | Medium-Bush Plant Type

Strengths

- › Good lateral branches for an early variety
- › Consistent performance in NW MN & North Dakota
- › Rps 1c gene for multi-race Phytophthora
- › Strong Agronomic package
- › Moderate resistance to Brown Stem Rot



6903XN

0.3

Medium-Tall Plant Height | Medium-Bush Plant Type

Strengths

- › Excellent IDC tolerance
- › Adapts to most environments in ND & Northern MN
- › Outstanding stress tolerance
- › Rps 1c gene for multi-race Phytophthora
- › Very consistent top performing variety

› SCN Tolerance



6703XN

0.3

Medium Plant Height | Medium Plant Type

Strengths

- › Overall very solid agronomics
- › Adapts to variable soil types and environments
- › Rps 3a gene for multi-race Phytophthora
- › Outstanding emergence and stress tolerance
- › Excellent standability

› SCN Tolerance



Soybean Cyst Nematode Race	Phytophthora Gene	Phytophthora Field Tolerance	Brown Stem Rot	White Mold	Sudden Death Syndrome	Charcoal Root Rot	Dahlman Brand
R3, MR14	Rps 1k	7.0	9.0	7.0	NA	7.0	68008XN
NG	Rps 1c	8.0	8.0	6.5	NA	8.0	5601RR2Y
R3, MR14	Rps 1c	8.0	6.5	7.0	NA	8.0	6903XN
R3, MR14	Rps 3a	8.5	6.5	7.0	NA	6.5	6703XN
MR3, MR14	Rps H1c	7.0	6.5	5.5	NA	7.0	6004XN
R3, MR14	NG	7.5	6.5	6.5	NA	8.0	6909XN
R3, MR14	NG	8.0	9.0	7.5	NA	8.0	6010XN

KEY: 1 = Poor 2-3 = Fair 4-5 = Good 6-7 = Very Good 8-9 = Excellent

6004XN

0.4

Medium Plant Height | Medium-Bush Plant Type

Strengths

- › Very good IDC tolerance
- › Adapts to high yield & low environments, west to east
- › Excellent emergence & cold soil tolerance
- › Rps H1c gene for multi-race Phytophthora
- › Great companion variety for 6903XN

› SCN Tolerance



6909XN

0.9

Medium-Tall Plant Height | Medium-Bush Plant Type

Strengths

- › Excellent IDC tolerance
- › Easily adapts to soil types & environments west to east
- › High level of Phytophthora field tolerance
- › Consistent performance in high & low yield environments

› SCN Tolerance



6010XN

1.0

Medium Plant Height | Medium Plant Type

Strengths

- › Dominate yield potential
- › Brown Stem Rot resistant
- › Excellent emergence & standability
- › Strong Phytophthora root rot field tolerance
- › IDC tolerance similar to 6811XN's

› SCN Tolerance



No dicamba may be used in-crop with seed in the Roundup Ready® Xtend Crop System unless and until approved by the U.S. EPA and the appropriate state agency for such use. As of 9/8/2020, no dicamba formulations are currently registered by the U.S. EPA for in-crop use with seed in the Roundup Ready® Xtend Crop System in the 2021 season.*

Dahlman Brand	Maturity	Plant Height	Plant Type	Iron Chlorosis	Emergence	Min-Till Adaptability	Stress Tolerance	Standability
6014XN	1.4	M	M/B	4.0	8.5	7.0	7.0	8.5
6015XN	1.5	MT	M	6.5	8.5	8.0	8.5	7.5
6815XN	1.5	M	M	7.0	8.5	9.0	8.5	7.0
NEW! 7117XF	1.7	M	M/B	6.0	8.0	8.0	8.0	6.5
6818XN	1.8	MT	MTh	7.0	8.5	9.0	8.5	8.5
6721XN	2.1	MT	M/B	8.0	8.5	8.0	8.5	6.5

KEY: 1 = Poor 2–3 = Fair 4–5 = Good 6–7 = Very Good 8–9 = Excellent

6014XN

1.4

Medium Plant Height | Medium-Bush Plant Type

Strengths

- › Very consistent win rate
- › Strong South and North Dakota performance data
- › Excellent emergence & standability
- › Rps 1c gene for multi-race Phytophthora
- › Great companion variety for 6815XN

› SCN Tolerance



6015XN

1.5

Medium-Tall Plant Height | Medium Plant Type

Strengths

- › Consistent performance from SD to WI
- › Excellent stress tolerance and emergence
- › Brown Stem Rot resistant
- › Rps 1c gene for multi-race Phytophthora
- › Solid overall disease package

› SCN Tolerance



6815XN

1.5

Medium Plant Height | Medium Plant Type

Strengths

- › Consistent performance from SD to WI
- › Excellent stress tolerance and emergence
- › Good northern movement
- › Moderate resistance to Brown Stem Rot
- › Rps 1c gene for multi-race Phytophthora

› SCN Tolerance



7117XF

1.7

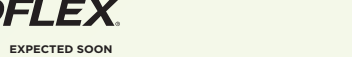
NEW!


Medium Plant Height | Medium-Bush Plant Type

Strengths

- › Aggressive lateral branching
- › Very good Frogeye Leaf Spot tolerance
- › Moderate resistance to Brown Stem Rot
- › HRps 1c gene for multi-race Phytophthora

› SCN Tolerance



Soybean Cyst Nematode Race	Phytophthora Gene	Phytophthora Field Tolerance	Brown Stem Rot	White Mold	Sudden Death Syndrome	Charcoal Root Rot	Dahlman Brand
R3, MR14	Rps 1c	6.0	8.0	5.5	NA	7.0	6014XN
R3, MR14	Rps 1c	6.5	9.0	7.0	6.0	8.0	6015XN
R3, MR14	Rps 1c	7.0	8.5	6.5	7.5	8.0	6815XN
R3, MR14	Rps H1c	7.0	8.5	6.0	5.0	NA	7117XF 
MR3, MR14	Rps 1a+3a	7.0	9.0	8.5	7.5	8.0	6818XN
R3, MR14	Rps 1c	7.0	8.5	6.0	8.0	8.0	6721XN

KEY: 1 = Poor 2-3 = Fair 4-5 = Good 6-7 = Very Good 8-9 = Excellent

6818XN

1.8

Medium-Tall Plant Height | Medium-Thin Plant Type

Strengths

- › Broadly adapted for RM with good southern movement
- › Excellent standability and emergence
- › High level of SWM tolerance
- › Brown Stem Rot resistant
- › Rps 1a+3a gene for multi-race Phytophthora

› SCN Tolerance



6721XN

2.1

Medium-Tall Plant Height | Medium-Bush Plant Type

Strengths

- › Dominate yield potential across a large area west to east
- › Aggressive lateral branching
- › Excellent emergence and stress tolerance
- › Moderate resistance to Brown Stem Rot
- › Rps 1c gene for multi-race Phytophthora

› SCN Tolerance



No dicamba may be used in-crop with seed in the Roundup Ready® Xtend Crop System unless and until approved by the U.S. EPA and the appropriate state agency for such use. As of 9/8/2020, no dicamba formulations are currently registered by the U.S. EPA for in-crop use with seed in the Roundup Ready® Xtend Crop System in the 2021 season.*

**THE NEXT
BIG THING.**



EXPECTED SOON

PROVEN PERFORMANCE.

NOW WITH THE ADDITION

OF GLUFOSINATE TOLERANCE.

Talk to your dealer to learn more and visit us online at XtendFlexSoy.com



Current stocks of dicamba herbicides previously approved for in-crop use with seed in the Roundup Ready® Xtend Crop System may not be used for the 2021 growing season. Dicamba may harm crops that are not tolerant to dicamba. Contact the U.S. EPA and your state pesticide regulatory agency with any questions about the approval status of dicamba herbicides products for in-crop use with seed in the Roundup Ready® Xtend Crop System.

NOTICE: DO NOT APPLY ANY HERBICIDE TO SEED IN THE ROUNDUP READY® XTEND CROP SYSTEM UNLESS IT HAS A PRODUCT LABEL SPECIFICALLY AUTHORIZING THAT USE. TO USE A HERBICIDE IN ANY MANNER INCONSISTENT WITH ITS LABELING IS A VIOLATION OF FEDERAL LAW. REFER TO THE BAYER TECHNOLOGY USE GUIDE FOR DETAILS AND RECOMMENDATIONS ON USING APPROVED ROUNDUP® AND LIBERTY® BRANDED HERBICIDES ON SEED IN THE ROUNDUP READY® XTEND CROP SYSTEM.

XtendFlex® soybeans have received full approval for planting in the United States but are pending approval in certain export markets. For 2020, XtendFlex® soybeans were available as part of a stewarded introduction only to growers who signed a 2020 XtendFlex® Stewardship Agreement and agreed to follow the stewardship requirements. Commercial availability in 2021 is dependent upon regulatory approval.

ALWAYS READ AND FOLLOW GRAIN MARKETING AND ALL OTHER STEWARDSHIP PRACTICES AND PESTICIDE LABEL DIRECTIONS. See the Products Use Notice for "Next Big Thing" advertisement for XtendFlex® printed in this publication. All trademarks are the property of their respective owners. ©2020 Bayer Group. All rights reserved.

Dahlgman Brand	Maturity	Plant Height	Plant Type	Iron Chlorosis	Emergence	Min-Till Adaptability	Stress Tolerance	Standability
10009E3N	0.09	M	MTh	8.0	8.5	7.5	7.0	6.0
NEW! 1102E3N	0.2	M	M	6.5	8.5	8.0	7.0	8.5
1003E3	0.3	M	M/B	6.0	8.5	9.0	7.5	7.5
1004E3N	0.4	M	M/B	7.5	8.5	8.0	8.5	7.0
NEW! 1108E3N	0.8	MT	M	7.0	8.5	8.0	8.5	7.0

KEY: 1 = Poor 2-3 = Fair 4-5 = Good 6-7 = Very Good 8-9 = Excellent

10009E3N

0.09

Medium Plant Height | Medium-Thin Plant Type

Strengths

- › Solid overall disease package
- › Very solid SWM tolerance
- › Moderate resistance to Brown Stem Rot
- › Excellent emergence and stress tolerance
- › Rps 1a gene for multi-race Phytophthora

› SCN Tolerance



1102E3N

0.2

NEW!

Medium Plant Height | Medium Plant Type

Strengths

- › Solid SWM tolerance
- › Consistent in either high or low yield environments
- › Stem Canker resistant
- › Rps 1c gene for multi-race Phytophthora
- › Dark green, large round leaves

› SCN Tolerance



The Enlist™ System - Get Control of Tough Weeds



- New 2,4-D Choline
- Glyphosate
- Glufosinate

Following burndown, Enlist Duo® and Enlist One® with Colex-D® technology are the only herbicides containing 2,4-D that are labeled for preemergence and postemergence use with Enlist E3™ soybeans.



Enlist Duo®

COLEX-D® technology

HERBICIDE

- Convenient blend of 2,4-D choline and glyphosate
- Two modes of action to deliver control and help prevent resistance in your fields



Enlist One®

COLEX-D® technology

HERBICIDE

- Straight-goods 2,4-D choline with additional tank-mix flexibility
- Ability to tank-mix with Liberty® herbicide and other qualified herbicides, customizing the ratio of herbicides to match each farm's needs

On-Target Applications

- 90% less drift than traditional 2,4-D
- 96% less volatile than 2,4-D ester

Soybean Cyst Nematode Race	Phytophthora Gene	Phytophthora Field Tolerance	Brown Stem Rot	White Mold	Sudden Death Syndrome	Charcoal Root Rot	Dahlman Brand
R3, MR14	Rps 1a	6.0	7.5	7.5	NA	5.0	10009E3N
R3, MR14	Rps 1c	7.5	6.5	7.5	NA	7.0	1102E3N <small>NEW!</small>
S	Rps 3a	8.0	9.0	7.5	NA	6.0	1003E3
R3, MR14	Rps 3a	7.0	9.0	5.0	NA	4.0	1004E3N
R3, MR14	Rps 1c3a	8.5	6.5	6.5	NA	6.0	1108E3N <small>NEW!</small>

KEY: 1 = Poor 2-3 = Fair 4-5 = Good 6-7 = Very Good 8-9 = Excellent

1003E3

0.3

Medium Plant Height | Medium-Bush Plant Type

Strengths

- › Adapted to the heavier RRV soils
- › Solid overall disease package
- › Brown Stem Rot resistant
- › Excellent emergence and early vigor
- › Rps 3a gene for multi-race Phytophthora



1004E3N

0.4

Medium Plant Height | Medium-Bush Plant Type

Strengths

- › Solid IDC tolerance
- › Adapts to the RRV, south into SD & west to east
- › Brown Stem Rot resistant
- › Rps 3a gene for multi-race Phytophthora
- › Strong lateral branches, clean look

› SCN Tolerance



1108E3N

0.8 **NEW!**

Medium-Tall Plant Height | Medium Plant Type

Strengths

- › Moves south of RM zone well
- › Consistent, stable at high or low yield environments
- › Stem Canker resistant
- › Rps 1c3a gene for multi-race Phytophthora
- › Excellent emergence and stress tolerance

› SCN Tolerance



Dahlman Brand	Maturity	Plant Height	Plant Type	Iron Chlorosis	Emergence	Min-Till Adaptability	Stress Tolerance	Standability
NEW! 1111E3N	1.1	M	M	7.0	8.5	8.0	8.5	6.5
1014E3N	1.4	MT	M/B	6.5	8.5	8.0	8.5	6.5
NEW! 1117E3N	1.7	M	M/B	6.5	8.5	8.0	7.5	7.5
NEW! 1120E3N	2.0	M	M	6.0	8.5	9.0	7.0	7.0

KEY: 1 = Poor 2-3 = Fair 4-5 = Good 6-7 = Very Good 8-9 = Excellent

1111E3N

1.1

NEW!

Medium Plant Height | Medium Plant Type

Strengths

- › Has the Sulfonylurea Tolerant Soybean (STS[®]) gene
- › Very high win rates since 2018
- › Stem Canker resistant
- › Very strong Phytophthora Root Rot field tolerance
- › Excellent emergence and stress tolerance

› SCN Tolerance



1014E3N

1.4

Medium-Tall Plant Height | Medium-Bush Plant Type

Strengths

- › Very competitive performance data across SD & MN
- › Strong overall disease & agronomic package
- › Brown Stem Rot resistant
- › Rps 1c gene for multi-race Phytophthora

› SCN Tolerance



1117E3N

1.7

NEW!

Medium Plant Height | Medium-Bush Plant Type

Strengths

- › Solid SWM tolerance
- › Moves south of RM zone well
- › Stem Canker resistant
- › Rps 1k gene for multi-race Phytophthora
- › Excellent emergence and standability

› SCN Tolerance



1120E3N

2.0

NEW!

Medium Plant Height | Medium Plant Type

Strengths

- › Strong overall disease package
- › Can move north of RM zone
- › BSR & Stem Canker resistant
- › Rps 1k gene for multi-race Phytophthora
- › Improved SWM tolerance over Enlist E3's in comparable RM

› SCN Tolerance



Soybean Cyst Nematode Race	Phytophthora Gene	Phytophthora Field Tolerance	Brown Stem Rot	White Mold	Sudden Death Syndrome	Charcoal Root Rot	Dahlman Brand
R3, MR14	NG	8.0	6.5	6.0	5.5	7.0	1111E3N <small>NEW!</small>
R3, MR14	Rps 1c	7.0	9.0	5.0	6.5	7.0	1014E3N
R3, MR14	Rps 1k	7.5	6.5	7.0	5.5	7.0	1117E3N <small>NEW!</small>
R3, MR14	Rps 1k	7.5	9.0	7.0	5.5	7.0	1120E3N <small>NEW!</small>

KEY: 1 = Poor 2–3 = Fair 4–5 = Good 6–7 = Very Good 8–9 = Excellent

SOYBEANS



Think Before You Bin-Run

Verification Required The last patent on the original Roundup Ready® soybean trait expired a few years ago and U.S. farmers may legally plant saved seed from some varieties of soybean containing the Roundup Ready® soybean trait. However, it is important that you check with your seed supplier to determine if a specific Roundup Ready® soybean variety is covered by other intellectual property rights, and if so, the policy for saving seed of that variety.

Higher Seeding Rate A higher seeding rate may be required for bin-run Roundup Ready® soybeans compared to new branded seed.

Yield Loss Genuity® Roundup Ready 2 Yield® soybean varieties and Roundup Ready 2 Xtend® soybean varieties typically have a higher yield opportunity than Roundup Ready® soybean varieties.

Cleanout Loss Loss of seed and/or shrink occurs during the seed cleaning and handling processes for bin-run seed.

Seed Treatment Costs Treating your seed will add costs—both the cost of the treatment and the application of that treatment.

Lost Income Every bushel of saved seed you plant is a bushel you're not selling as commodity grain.

Increased Seed Management If you plan to save and bin-run Roundup Ready® soybeans for planting, you will have to manage your harvest operations and grain storage so that the seed isn't co-mingled with other seed that's covered by intellectual property rights.

High Value of New Branded Seed

Latest Technology

- High-yielding soybean technologies
- Better variety options
- Leading seed treatment options

Customer Service

- Dealer agronomic support before and after the sale
- Replant policy support
- Convenient packaging and delivery

Reliable Germination and Quality

- Rigorously tested and meets U.S. Federal Seed Act requirements
- Free of seed-borne diseases
- Properly stored and conditioned



Monsanto receives calls and letters each year about potential seed compliance matters. Anyone with a concern or question can anonymously call 1-800-768-6387.

"Genuity" Roundup Ready 2 Yield® soybeans and Roundup Ready 2 Xtend® soybeans are covered by different patents than original Roundup Ready® soybeans and cannot be saved and planted. For more information about seed innovation and intellectual property protection, please visit www.seedpatience.com.

Monsanto Company is a subsidiary of Bayer AG.

Monsanto Company is a member of Excellence Through Stewardship® (ETIS). Monsanto products are commercialized in accordance with ETIS Product Launch Stewardship Guidelines, and in compliance with Monsanto's Policy for Commercialization of Biotechnology-Derived Plant Products in Commodity Crops. Roundup Ready® soybeans, Genuity® Roundup Ready 2 Yield® soybeans, and Roundup Ready 2 Xtend® soybeans have been approved for export into key export markets with functioning regulatory systems. Any crop or material produced from these products can only be exported to, or used, processed or sold in countries where all necessary regulatory approvals have been granted. It is a violation of national and international law to move material containing biotech traits across boundaries into nations where import is not permitted. Growers should take to their own hands or product purchaser to confirm that buying position for this product. Excellence Through Stewardship® is a registered trademark of Excellence Through Stewardship.

ALWAYS READ AND FOLLOW PESTICIDE LABEL DIRECTIONS. Roundup Ready® soybeans and Roundup Ready 2 Yield® soybeans contain genes that confer tolerance to glyphosate, the active ingredient in Roundup® brand agricultural herbicides. Roundup Ready 2 Xtend® soybeans contain genes that confer tolerance to glyphosate and dicamba, the active ingredient in RoundMax® herbicide with VaporGrip® Technology. Dicamba will kill crops that are not tolerant to dicamba. RoundMax® herbicide with VaporGrip® Technology is part of the Roundup Ready® brand Crop System and is a restricted use pesticide. Genuity®, Roundup Ready®, Roundup Ready 2 Yield®, Roundup Ready 2 Xtend®, Roundup®, VaporGrip® and RoundMax® are registered trademarks of Bayer Group. ©2019 Bayer Group. All Rights Reserved. [19-00070p] (S4N198247)





WL 356HQ.RR Alfalfa

- › Excellent tolerance to Roundup® non-selective herbicide
- › Very high yielding under 3-5 cut harvest managements
- › **Unique wet soil disease resistance package (HR to Aphanomyces Race 2) promoting better stand establishment, persistence, and forage yield**
- › WL 356HQ.RR carries the “HQ” designation, exhibiting strong potential to deliver higher feed intake, improve milk production, and increase profitability when fed
- › Very winterhardy (WH=1.6); WL 356HQ.RR delivers long stand life under adverse weather and soil conditions
- › Highly resistant (HR) to stem nematode
- › Perfect Disease Resistance Index (DRI) of 35/35 promotes fast seedling establishment and long stand life
- › **Ideal FD4 variety for Midwest and Northeastern region of the U.S. for hay and haylage uses**

Agronomic Traits

Maturity Early
Fall Dormancy 3.8
Winterhardiness 1.6
Forage Yield Index Very High
Digestibility/Feed Value Superior
Persistence Index Very High
Recovery After Harvest Very Fast
Traffic Tolerance Very Good
Standability Excellent
Multileaf Expression Very High (76%)

Pest Resistance Traits

Bacterial Wilt HR (78%)
Fusarium Wilt HR (83%)
Anthracoze HR (63%)
Phytophthora Root Rot HR (55%)
Aphanomyces Root Rot - Race 1 HR (62%)
Aphanomyces Root Rot - Race 2 HR (59%)
Verticillium Wilt HR (64%)
Leaf Disease R
Aphids HR
Stem Nematode HR (58%)
Disease Resistance Index 35/35

HR = High Resistance R = Resistant



WL 372HQ.RR Alfalfa

- › Excellent tolerance to Roundup® non-selective herbicide
- › Our highest-yielding winterhardy RR FD5 released to date
- › Very high yielding under 4-6 cut harvest schedules
- › **WL 372HQ.RR demonstrates “HQ” forage quality levels to deliver higher feed intake, improved milk production, and greater profitability when fed**
- › Very winterhardy (WH=1.8); WL 372HQ.RR delivers long stand life even under harsh weather conditions
- › Very strong disease package with a “perfect” Disease Resistance Index (DRI) of 30/30 to promote fast establishment
- › High resistance (HR) to stem nematode
- › **Ideal FD5 variety for cash hay growers, dairy producers, or other intensive managers; WL 372HQ.RR consistently produces big yields of leafy, fine-stemmed hay with high RFQ levels**

Agronomic Traits

Maturity Early
Fall Dormancy 4.9
Winterhardiness 1.8
Forage Yield Index Very High
Digestibility/Feed Value Superior
Persistence Index Very High
Recovery After Harvest Very Fast
Traffic Tolerance Very Good
Standability Excellent
Multileaf Expression Very High (74%)

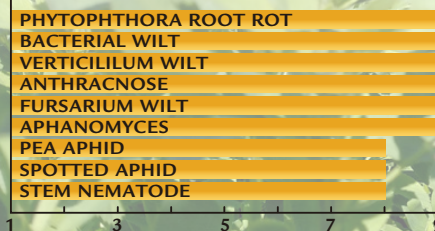
Pest Resistance Traits

Bacterial Wilt Hr (68%)
Fusarium Wilt Hr (70%)
Anthracoze Hr (56%)
Phytophthora Root Rot Hr (57%)
Aphanomyces Root Rot (Race 1) Hr (56%)
Verticillium Wilt Hr (60%)
Leaf Disease R
Aphids Hr
Stem Nematode Hr (55%)
Disease Resistance Index 30/30

HR = High Resistance R = Resistant

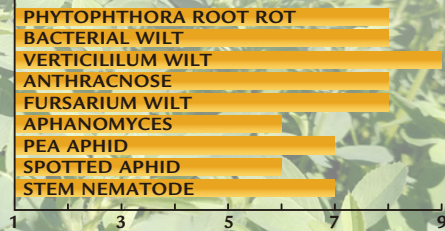
Perfect Plus Alfalfa

- › Winter hardiness – very hardy
- › Recovery – very fast
- › Wisconsin disease rating – 30 of 30
- › Leaf to stem ratio – very high



Colt's Alfalfa

- › Winter hardiness – hardy
- › Recovery – very fast
- › Wisconsin disease rating – 29 of 30
- › Leaf to stem ratio – high



Shelly Wheat

"Shelly" wheat variety was developed by the University of Minnesota and Released in January, 2016, Shelly is a high-yielding spring wheat variety well suited for all of the spring wheat-growing region.





In state trials it yielded equal to the popular varieties "Faller" and "Prosper," but with slightly better protein. The heading date of Shelly is similar to Faller. It possesses a good disease-resistance package with moderate resistance to scab, leaf rust and bacterial leaf streak. It also has an excellent rating for resistance to stripe and stem rust. Shelly is slightly shorter than Faller and has similar straw strength. It has good test weight and pre-harvest sprouting resistance.

Jochum Wiersma, University of Minnesota Extension Agronomist, says, "Shelly is a nice compliment in the strong University of Minnesota line-up of HRSW cultivars and replaces Norden in the top yield segment. It is a strong contender to replace both Faller and its sister line Prosper, which together have accounted for roughly a third of Minnesota's wheat acreage in recent years."

The release is named after the town of Shelly, Minnesota. It is on the west side of Norman County, Minnesota, near the Red River and in prime wheat growing country.



2021 Dahlman Corn Reference Chart

RM Relative Maturity	VT Double PRO RIB COMPLETE VT Double PRO® RIB Complete® corn blend	SmartStax RIB COMPLETE SmartStax® RIB Complete® corn blend	Roundup Ready 2 CORN Roundup Ready® 2	Conventional Conventional
82	R41-22VT2PRIB		R41-12 	
82	R41-23VT2PRIB 			
84	R42-28VT2PRIB 			
85	R43-29VT2PRIB		R43-19	D43-01
86	R43-24VT2PRIB			
90	R45-25VT2PRIB			D45-03
90	R45-28VT2PRIB		R45-12	
92	R46-27VT2PRIB		R46-14 	D46-04
94	R47-24VT2PRIB		R47-10	
94	R47-26VT2PRIB			
95	R48-28VT2PRIB			D48-04
96	R48-21VT2PRIB			D48-08
98	R49-23VT2PRIB			D49-09
98	R49-25VT2PRIB			D49-02
100		R50-357SSRIB		
101	R51-22VT2PRIB			
103	R52-24VT2PRIB		R52-14	D52-04
106		R53-359SSRIB		

Matching colors indicate corn hybrids from the same base genetic family





Before opening a bag of seed, be sure to read, understand and accept the stewardship requirements, including applicable refuge requirements for insect resistance management, for the biotechnology traits expressed in the seed as set forth in the Monsanto Technology/Stewardship Agreement that you sign. By opening and using a bag of seed, you are reaffirming your obligation to comply with the most recent stewardship requirements.

DUE TO THE UNIQUE CROPPING PRACTICES DO NOT PLANT ROUNDUP READY® ALFALFA IN IMPERIAL COUNTY, CALIFORNIA, PENDING IMPORT APPROVALS AND UNTIL FORAGE GENETICS INTERNATIONAL, LLC (FGI) GRANTS EXPRESS PERMISSION FOR SUCH PLANTING.

Forage Genetics International, LLC ("FGI") is a member of Excellence Through Stewardship® (ETS). FGI products are commercialized in accordance with ETS Product Launch Stewardship Guidance, and in compliance with FGI's Policy for Commercialization of Biotechnology-Derived Plant Products in Commodity Crops. Roundup Ready® Alfalfa has pending import approvals. Any crop or material produced from this product can only be exported to, or used, processed or sold in countries where all necessary regulatory approvals have been granted. It is a violation of national and international law to move material containing biotech traits across boundaries into nations where import is not permitted. Growers should talk to their grain handler or product purchaser to confirm their buying position for this product. Growers should refer to <http://www.biotradestatus.com/> for any updated information on import country approvals. Excellence Through Stewardship® is a registered trademark of Excellence Through Stewardship.

ALWAYS READ AND FOLLOW PESTICIDE LABEL DIRECTIONS Roundup Ready® crops contain genes that confer tolerance to glyphosate. Glyphosate herbicides will kill crops that are not tolerant to glyphosate. Roundup Ready® is registered trademarks of Bayer Group, used under license by Forage Genetics International, LLC.

Bayer is a member of Excellence Through Stewardship® (ETS). Bayer products are commercialized in accordance with ETS Product Launch Stewardship Guidance, and in compliance with Bayer's Policy for Commercialization of Biotechnology-Derived Plant Products in Commodity Crops. Commercialized products have been approved for import into key export markets with functioning regulatory systems. Any crop or material produced from this product can only be exported to, or used, processed or sold in countries where all necessary regulatory approvals have been granted. It is a violation of national and international law to move material containing biotech traits across boundaries into nations where import is not permitted. Growers should talk to their grain handler or product purchaser to confirm their buying position for this product. Excellence Through Stewardship® is a registered trademark of Excellence Through Stewardship.

XtendFlex® soybeans have received full approval for planting in the United States but, as of the date this material was published, are pending approval in certain export markets. Commercial availability in 2021 is dependent upon regulatory approval.

ALWAYS READ AND FOLLOW PESTICIDE LABEL DIRECTIONS. It is a violation of federal and state law to use any pesticide product other than in accordance with its labeling. NOT ALL formulations of dicamba or glyphosate are approved for in-crop use with Roundup Ready 2 Xtend® soybeans. NOT ALL formulations of dicamba, glyphosate or glufosinate are approved for in-crop use with products with XtendFlex® Technology. ONLY USE FORMULATIONS THAT ARE SPECIFICALLY LABELED FOR SUCH USES AND APPROVED FOR SUCH USE IN THE STATE OF APPLICATION. Contact the U.S. EPA and your state pesticide regulatory agency with any questions about the approval status of dicamba herbicide products for in-crop use with Roundup Ready 2 Xtend® soybeans or products with XtendFlex® Technology.

B.t. products may not yet be registered in all states. Check with your seed brand representative for the registration status in your state.

IMPORTANT IRM INFORMATION: RIB Complete® corn blend products do not require the planting of a structured refuge **except** in the Cotton-Growing Area where corn earworm is a

significant pest. **See the IRM/Grower Guide for additional information. Always read and follow IRM requirements.**

Performance may vary, from location to location and from year to year, as local growing, soil and weather conditions may vary. Growers should evaluate data from multiple locations and years whenever possible and should consider the impacts of these conditions on the grower's fields.

Roundup Ready® 2 Technology contains genes that confer tolerance to glyphosate. **Roundup Ready 2 Xtend® soybeans contain genes that confer tolerance to glyphosate and dicamba. Products with XtendFlex® Technology contains genes that confer tolerance to glyphosate, glufosinate and dicamba. Glyphosate** will kill crops that are not tolerant to glyphosate. **Dicamba** will kill crops that are not tolerant to dicamba. Glufosinate will kill crops that are not tolerant to glufosinate. Contact your seed brand dealer or refer to the Bayer Technology Use Guide for recommended weed control programs.

RIB Complete®, Roundup Ready 2 Technology and Design™, Roundup Ready 2 Xtend®, Roundup Ready 2 Yield®, Roundup Ready®, SmartStax®, VT Double PRO® and XtendFlex® are trademarks of Bayer Group. Herculex® is a registered trademark of Dow AgroSciences LLC. LibertyLink® and the Water Droplet Design® is a trademark of BASF Corporation. Respect the Refuge and Corn Design® and Respect the Refuge® are registered trademarks of National Corn Growers Association.

Dow AgroSciences is a member of Excellence Through Stewardship® (ETS). Dow AgroSciences products are commercialized in accordance with ETS product launch stewardship guidance and Dow AgroSciences Product Launch Stewardship Policy. No crop or material produced from this product can be exported to, used, processed or sold across boundaries into nations where import is not permitted. Growers should talk to their grain handler or product purchaser to confirm their buying position for this product. For further information about your crop or grain marketing options, contact DAS at 877-4-TRAITS (877-487-2487). Information regarding the regulatory and market status of agricultural biotechnology products can be found at: www.biotradestatus.com.

Seeds containing the Enlist, Herculex and PowerCore traits are protected under numerous US patents. Seeds containing patented traits can only be used to plant a single commercial crop and cannot be saved or replanted. You acknowledge and agree to be bound by the terms and conditions of the following documents in effect at the time of planting of this seed: (i) the Technology Use Agreement and (ii) the Product Use Guides for all technologies in this seed, including the Herbicide Resistance Management (HRM), and Use requirements detailed therein (www.corteva.us/Resources/trait-stewardship.html). To plant Enlist, Herculex and PowerCore seed, you must have a limited license from Corteva Agriscience (or other appropriate affiliates). In consideration of the foregoing, Corteva Agriscience grants to the Grower the limited license to use its technology to produce only a single commercial crop in the United States under the terms and conditions set forth in the Technology Use Agreement in effect at the time of planting of this seed. Always read and follow herbicide label directions prior to use: Enlist® products contain the Enlist trait that provides crop safety for use of labeled over-the-top applications of glyphosate, glufosinate and 2,4-D herbicides featuring Colex-D® technology when applied according to label directions. Following burndown, the only 2,4-D containing herbicide products that may be used with Enlist® crops are products that feature Colex-D technology and are expressly labeled for use on Enlist crops. 2,4-D products that do not contain Colex-D technology are not authorized for use in conjunction with Enlist products.

The transgenic soybeans event in Enlist E3® soybeans is jointly developed and owned by Dow AgroSciences LLC and M.S. Technologies, L.L.C.™ Enlist, Enlist E3, the Enlist E3 logo, and Colex-D are trademarks of The Dow Chemical Company ("Dow") or an affiliated company of Dow. Excellence Through Stewardship is a registered trademark of Excellence Through Stewardship.

Enlist E3® soybean seeds containing the Enlist® trait can only be used to plant a single commercial crop. It is unlawful to save and replant Enlist E3® soybeans. Additional information and limitations on the use of these products are provided in the Corteva Agriscience Technology Use Agreement and Enlist® Soybean Product Use Guide. U.S. patents for Dow AgroSciences technologies can be found at the following webpage: www.corteva.us/Resources/trait-stewardship.html

Seed containing a patented trait can only be used to plant a single commercial crop from which seed cannot be saved and replanted. Examples of seed containing a patented trait include but are not limited to Genuity® Roundup Ready 2 Yield® soybeans, and Roundup Ready 2 Xtend® soybeans. Additional information and limitations on the use of these products are provided in the Monsanto Technology Stewardship Agreement, the Monsanto Technology Use Guide, and Technology Use Guide Addendum to include Roundup Ready 2 Xtend® Soybean. U.S. patents for Monsanto technologies can be found at the following webpage: <http://www.monsantotechnology.com>



73504 200th Street, Dassel, MN 55325 • (320) 275-2527 • Fax (320) 275-2290
1-800-BUY SEED (1-800-289-7333) • www.dahlgmanseed.com





- Premium Seed
- Leading Edge Technology
- Superior Liquid Fertilizers and Foliar

BRYAN SCHERR – Owner

bryan@integrityagllc.com
605-281-1033

KEVIN SCHERR – Owner

kevin@integrityagllc.com
605-281-0640

